

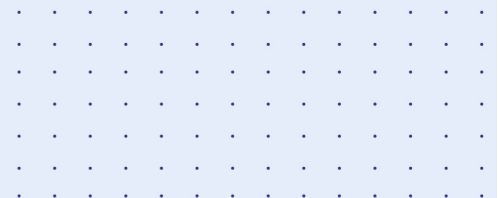
ELITE 101

DIAGNOSTIC AUDIOMETER



AUDIOLOGY WITH
EXCELLENCE

PTA, SPEECH, SISI, TONE DECAY
HYBRID TECHNOLOGY
TABULAR DISPLAY OF THRESHOLD VALUES
AC, BC, FF, MASKING



ELITE 101

Diagnostic Audiometer

AVAILABLE TEST

Pure Tone Audiometry (AC, BC, FF)
Masking (WN, NBN, SN)
Speech (Live and Recorded)
SISI (Auto Score With 1,2,3,5 dB Increment)
Tone Decay (60sec Duration)

SIGNALS SPECIFICATION

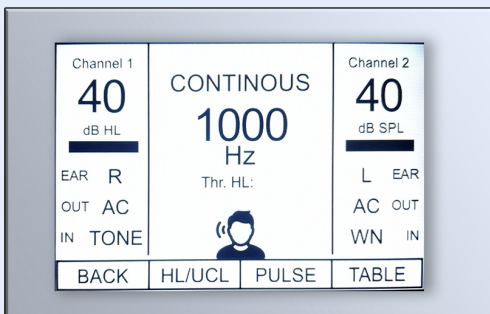
Tone, Warble
Continuous, Pulse Mode (0.5Hz & 1Hz)
Normal On and Normal Off
HL and UCL

KEY FEATURES

- Ergonomic Design
- 3.5" Display
- Rotary Encoders
- Metal Touch Interrupter
- Auto Frequency shift for faster operations
- HL/UCL as standard in PTA
- Hybrid Technology, works standalone as well as through PC
- Acoustic Suite

ACCESSORIES

- Ac Transducer
- Bc Transducer
- Patient Response Switch
- Medical Grade Power Supply
- Acoustic Suite (PC Software)
- Carrying Case
- Monitor Headset
- Collar Mic
- FF speaker (optional)
- Insert Masker (optional)
- Insert Earphone (optional)
- Sound Room Kit (optional)



TECHNICAL DATA

Intensity
AC : -10 to 120 dB HL
BC : -10 to 80 dB HL
Frequency range : 125-8000 Hz
Input : Tone, warble, AUX, Mic, Internal memory
Masking : NBN, WN, SN
Output : AC L+R, BC, FF L+R, insert masking
Talk over : Built-in or external microphone
Monitor : Headphone
Test battery : Pure Tone and Speech Audiometry, SISI, Tone Decay

DEVICE SPECIFICATIONS

Data storage : Internal Memory for 2000 Patients
Display type : Tft display
Display size/res : 3.5 inch / 320*480 Pixel (TFT display)
Printer : Through Acoustic Suite (PC Software)
PC interface : Bidirectional USB
Modes of oper. : Stand-alone and PC base
Dimensions : 320 mm x 230 mm x 75 mm
12.6 x 12.6 x 3.5 in. (DxWxH)
Weight : 900 gm

FREQUENCIES MAXIMUM LEVEL dB HL

Freq. (Hz)	Ac TDH-39 DD45	AC ER-3 IP30	BC	FF[**]
125	80	90	—	75
250	100	105	45	85
500	110	110	65	95
750	115	115	70	95
1000	120	120	75	95
1500	120	120	80	95
2000	120	120	80	95
3000	120	120	75	95
4000	120	110	75	95
6000	105	95	55	90
8000	95	90	50	85